

**WARNING:**  
 Final approach track offset 10° from ECL  
 Intersection occurs 630m before THR33  
 OCA located in RF leg, before FROP

APP Reggio APP 120.275  
 TWR Reggio TWR 118.250

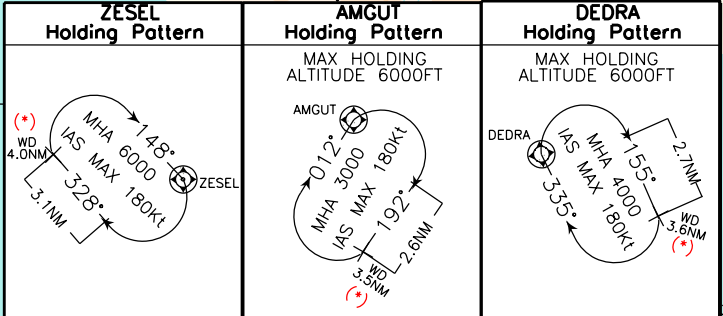
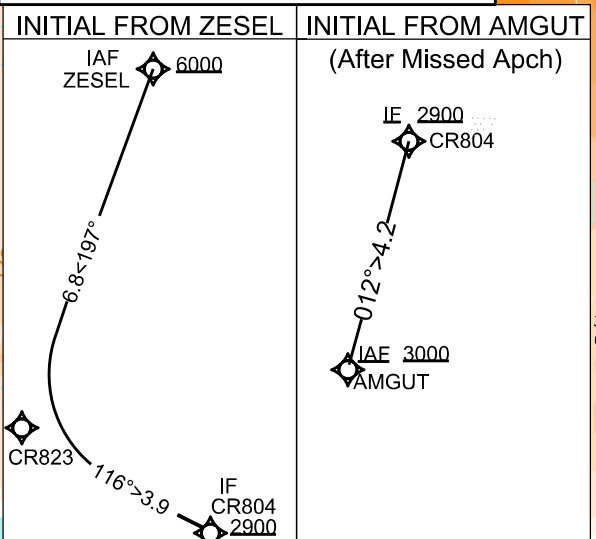
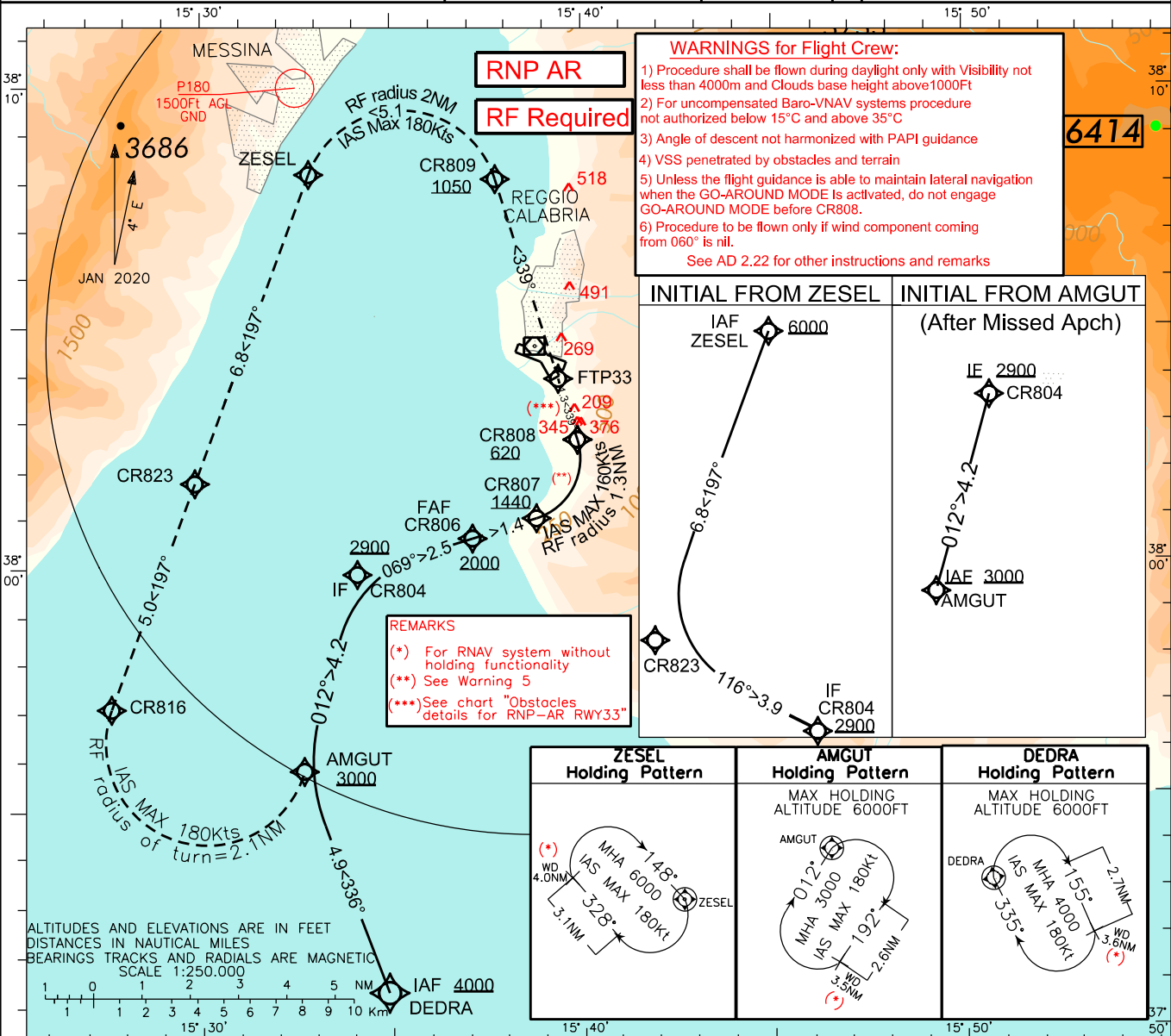
AD ELEV  
 95

L  
 I  
 C  
 R

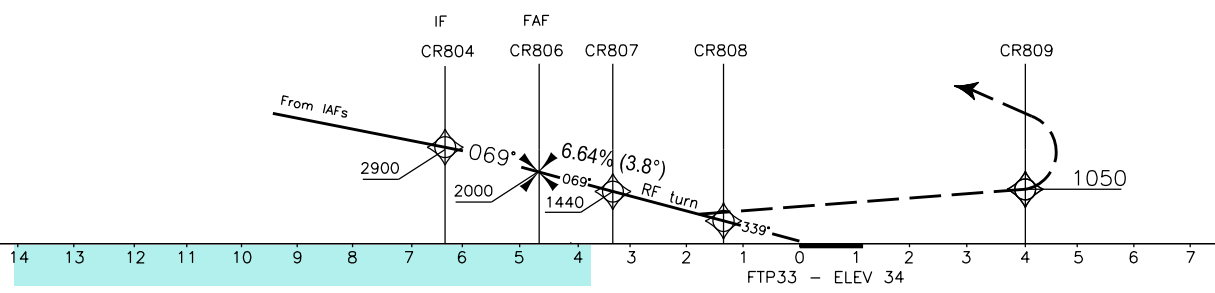
REGGIO CALABRIA  
 RNP (AR) RWY 33

NOT STANDARD ICAO

NEW CHART



TRANSITION ALT 7000  
 TCH 15M  
 MISSED APPROACH: Maintain 800FT (5) while continuing on the RF turn to CR808 then when established on track 339° towards CR809 climb to 3000FT. At CR809 turn left via a RF turn to ZESSEL (IAS Max 180Kts) then proceed via CR823-CR816 then turn left via RF turn (IAS Max 180Kts) to AMGUT to join Missed Approach Holding Pattern



OCA (OCH)		CATEGORY			FT per MIN	GS	DIST FTP33	ALT(HGT)	MNM SECT ALT	
		A	B	C					LICR	ARP
RNP 0.1		800 (766)			404	60	4 NM	1690(1656)	8500	
					539	80	3 NM	1290(1256)		
					673	100	2 NM	890 (856)		
					808	120				
					943	140				
					1077	160				